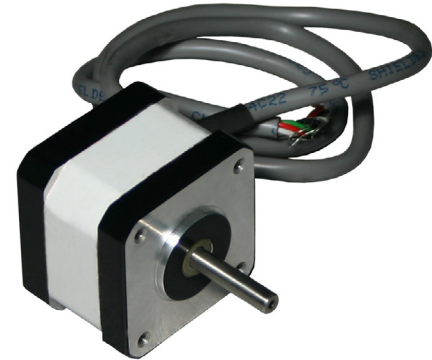


17L65 Series - Sealed High Torque Stepper Motors

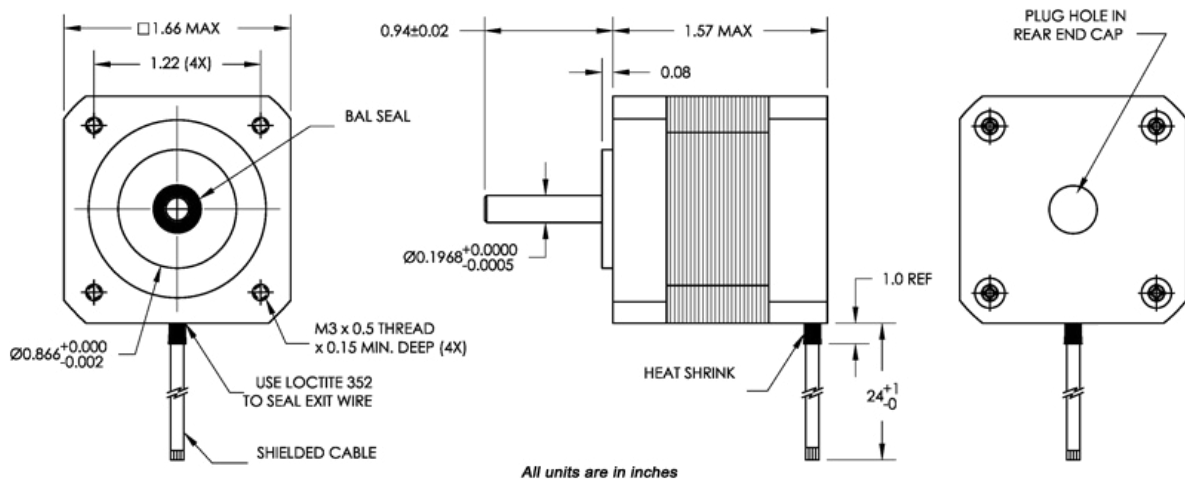


FEATURES

- **NEMA 17 Frame Size**
- **Splash Proof IP65 Sealed Stepper Motor**
- **1.8° Step Angle**
- **High Torque - Up to 83 oz-in**
- **High Step Accuracy and Resolution**
- **Low Vibration and Noise**
- **Can be Customized for**
 - **Shaft Options**
 - **Cables and Connectors**
- **RoHS Compliant**



DIMENSIONS



SPECIFICATIONS/ DESCRIPTION

The 17L65 Series High Torque Stepper Motors are designed to withstand splashdown, humid or damp environments, and water sprayback conditions. The IP65 sealed properties of this series ensure that moisture be kept out of the motors internal electronics. In addition, these compact motors provide the highest possible torque available in a sealed size 17 stepper. The 17L65 series is an excellent choice for lab automation, biotech, and semiconductor automation equipment, just to name a few. There are three stack lengths available in order to meet your specific system requirements. Customized options are also available upon request. [See Accessories on our website for optional motor adders such as encoders, cables and connectors.](#) For Gearbox options, see gearboxes. For compatible drivers, consider MBC15081, MBC25081TB, and DPE or DPY Series Driver Packs.

Model #	NEMA Size	Bipolar Torque (oz-in)	Bipolar Current (A)	Bipolar Inductance (mH)	Rotor Inertia (oz-in-sec ²)	Shaft Diameter (in)	# Lead Wires	Weight (lbs)	"L" Length (in)
17L65104S-LW4	17	63	2.0	2.26	0.00070	0.1968	4	0.6	1.57
17L65204S-LW4	17	83	2.0	2.50	0.00080	0.1968	4	0.7	1.89

Notes: All Shafts are smooth unless otherwise noted. Custom leadwires, cables, connectors, and windings are available upon request.

L010170